

Doimak

NEW

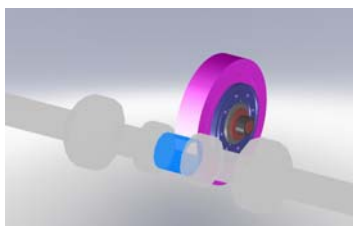
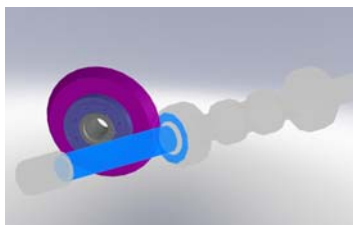
EXTERNAL AND UNIVERSAL GRINDING MACHINES RCN - SL



RCN-G 3000 SL



- Suitable for the grinding of medium size parts.
- Double wheel head assembled on a B Axis, one setup, one finished part.
- Direct driven technology in the wheel spindle.
- The components of the machine are manufactured by world leaders with service and stock in all industrialized countries.



MAIN TECHNICAL SPECIFICATIONS

Max. grinding length between centres:
2000/2500/3000/4000 mm

Centre Height 250 mm

Max. workpiece weight between centres ... 1000 Kgms

Grinding spindle head

X axial guide way hydrodynamic

Z axial guide way V plane hydrodynamic

Grinding wheel diameter, max 600 mm

Grinding wheel with max 100 mm

Grinding wheel drive power, external spindle... 21 Kw

Max. Peripheral speed of grinding wheel60 m/s

Workpiece spindle head

Spindle range speed 1-300 Rpm

Work centre adaptor size MK 5

Tailstock

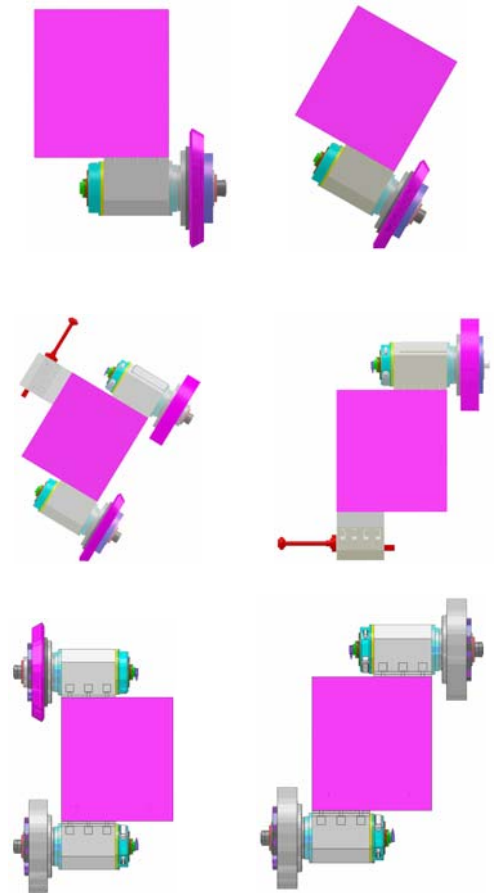
Max. stroke 90 mm

Centring pin mount MK 5

Cylinder error correction manual $\pm 0,10$ mm

Control Sinumerik 840 D

WHEELHEAD CONFIGURATIONS



www.doimak.es

Polígono Industrial San Lorenzo, 4

P.O. Box 11

Tel.: +34 - 943 740 647 - 943 743 300 - 943 743 304

Fax: +34 - 943 743 216

e-mail: webmaster@doimak.es

20870 ELGOIBAR - Guipuzcoa (SPAIN)

Due to the continuous improvement in technology and design, DOIMAK reserves the right to modify the specifications of this catalogue without previous warning.